



One Hundred Million Reasons

PRATHAM USA 2012 ANNUAL REPORT



1-13 1-13
1-13 1-13 1-13
1-13 1-13 1-13

OUR MISSION EVERY CHILD IN SCHOOL AND LEARNING WELL

This annual report covers the activities of *Pratham USA* during the period of January 1, 2012 to December 31, 2012. However, *Pratham's* program statistics may include data from the 2012 - 2013 Indian school year.

A MESSAGE FROM OUR PRESIDENT AND CHAIR

Dear *PRATHAM* family,

2012 has been another tremendous year for *Pratham* and *Pratham USA*. This would not have been possible without your support. *Pratham USA* raised \$10 million, of which half came from individuals, with the other half coming from foundations. The funds raised in the US represented over 70% of *Pratham's* 2012 budget.

A high point of the year was surely the WISE Award being received by Dr. Madhav Chavan, *Pratham* President and Co-Founder. Established by the Qatar Foundation, the WISE Award has been described as the Nobel Prize in Education and we are proud of this recognition. We are also grateful to Dr. Chavan who generously contributed his \$500,000 prize money to *Pratham*.

The bulk of your contributions continue to support our flagship Read India program, which has been expanding in both breadth and depth. This program,

focused on teaching basic literacy and numeracy skills to students in Grades 1 to 5, reached 1.5 million children in 2012. *Pratham* was able to achieve this ambitious target through large-scale teacher training efforts and partnerships with state governments. In parallel, we intensified our efforts in select villages to further demonstrate the opportunity for transformative impact.

The eighth Annual Status of Education Report (ASER) survey, which tested over 600,000 children in 16,000 villages across India, delivered mixed results. The good news is that the awareness generated by the report has never been greater. The results are being widely cited with extensive media coverage and utilization by state governments for analysis, planning and budgeting. The bad news, however, is that although 96% of 6 to 14 year-olds are enrolled in school, learning levels are still at only 50%. Over half of all fifth grade children

are unable to read at the second grade level.

A critical role of education is to prepare young adults to successfully enter the workforce, so our efforts in this area are a logical extension of *Pratham's* educational mission. Through generous and sustained support from Sudesh and Chitra Arora, as well as support from the Skoll Foundation and other donors, the *Pratham* Arora Centers for Education and the *Pratham* Institute have been growing steadily. In 2012, we helped over 20,000 young adults attain vocational skills for employment. Programs include our Foundation Course, which provides industry-specific training in areas such as hospitality, construction, automotive and home healthcare, as well as training and support for young entrepreneurs.

We are all acutely aware of how important literacy is in today's world.

The ability to read and write can truly make difference in a person's economic and personal development. The 2011 Indian census estimated that one-third of India's population is under the age of 15 and, of this group, a staggering 25% (100 million) are functionally illiterate. Let's not wait for any more reasons to act. Over the past nineteen years, *Pratham* has dedicated itself to developing low-cost, scalable solutions needed to reach these children. With your support, we can make a difference!



Atul Varadhachary

Dr. Atul Varadhachary
President



Arvind Sanger

Arvind Sanger
Chairman of the Board

PRATHAM LEADERSHIP

PRATHAM USA

BOARD OF DIRECTORS

Avinash Ahuja
Sudesh Arora
Dinyar Devitre
Vijay Goradia
Suren Gupta
Swatantra Jain, *CFO*
Jaideep Khanna
Paul Pandian
Arvind Sanger, *Chair*

PRATHAM INDIA

BOARD OF DIRECTORS

Mukesh D Ambani
Kumarmangalam Birla
Dr. Madhav Chavan
Dinyar Devitre
Reita Gadkari
Vijay Goradia
Pramit Jhaveri
Sharad Kale
Shahid Mahdi
Ramesh Mangaleswaran
Sanjay Nayar
Ajay G Piramal, *Chair*
Arvind Sanger
Narayanan Vaghul
Dr. Atul Varadhachary

PRATHAM INDIA

EXECUTIVE LEADERSHIP

Dr. Madhav Chavan, *Co-Founder & CEO*
Farida Lambay, *Co-Founder, Trustee*
& *Executive Secretary*
Dr. Rukmini Banerji

Usha Rane
Brij Kaul

PRATHAM USA

FUNCTIONAL LEADERSHIP

Dr. Atul Varadhachary
President

Ramesh Mahalingam
President Emeritus

PRATHAM USA

FUNCTIONAL LEADERSHIP

Dr. Arvind Amin
Sonu Anand
Yogi Patel
Chithra Ramesh
Vineeta Salvi

PRATHAM USA

CHAPTER LEADERSHIP

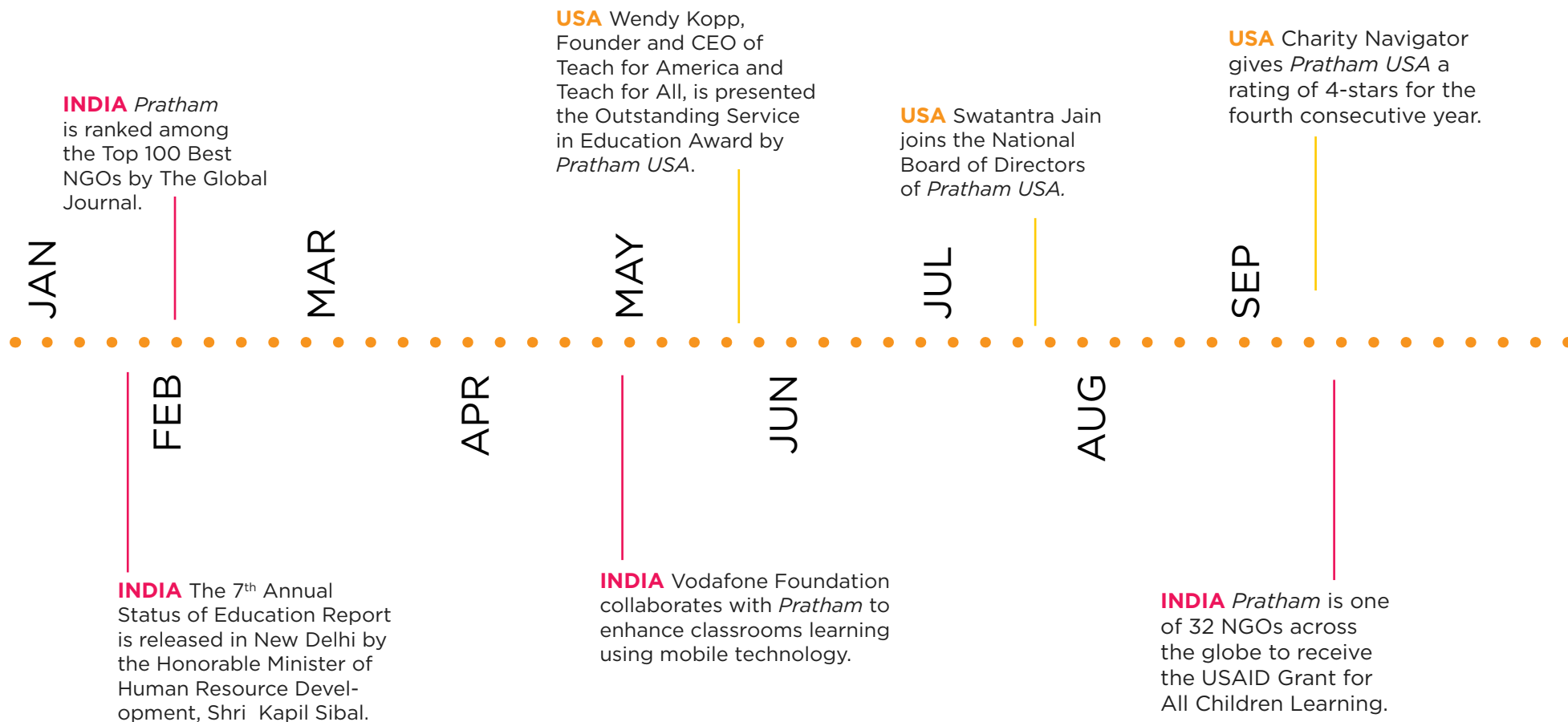
Austin: Vandana Kumar
Boston: Vikas Taneja
Charlotte: Maya Shenoy
Chicago: Dr. Raj Rajaram
Dallas: Vineet Goyal
Denver: Mayur Saigal
Houston: Dr. Marie Goradia
Los Angeles: Raj Dhami
New York: Dinyar Devitre
Phoenix: Priya Radhakrishnan
Raleigh: Chaya Rao
San Francisco: Amar Rao
Seattle: Viren Kamdar
Washington DC: Ramesh Mahalingam



ONE-THIRD OF INDIA'S POPULATION IS UNDER THE AGE OF 15 AND, OF THIS GROUP, A STAGGERING 25% (100 MILLION) ARE FUNCTIONALLY ILLITERATE. LET'S NOT WAIT FOR ANY MORE REASONS TO ACT.

1.5 MILLION children reached through Read India in **30,000** villages across **17** states. **60,000** volunteers trained in *Pratham* techniques. **4,000** child laborers and street children rescued and sheltered. **20,000** youth taught vocational skills. Over **2,600** girls who had previously dropped out tutored for State board examinations. **600,000** children in **300,000** households surveyed by ASER. **7,500** children educated in technology through the Digital Classrooms Program.

A YEAR IN REVIEW



OCT

NOV

DEC

INDIA The Joint Review Mission is held with Cabinet Secretary of the State of Bihar, Mr. Anup Mukherji serving as Mission Leader.

INDIA Dr. Madhav Chavan and is awarded the 2012 WISE Prize for Education. *Pratham* receives the Qimpro Gold Standard Award for quality practices in an Educational Institution and the Times of India Social Impact Award.



“MADHAV CHAVAN SERVES AS AN INSPIRATION TO ALL OF US. HIS APPROACH SHOWS THAT THE MOST IMPORTANT RESOURCES FOR SUCCESSFUL INNOVATION ARE A CLEAR VISION, DETERMINATION AND THE ABILITY TO APPLY UNRECOGNIZED CAPACITIES TO A SHARED CAUSE. DR. MADHAV CHAVAN HAS BROUGHT LIGHT INTO THE LIVES OF MANY MILLIONS OF PEOPLE AND I CONGRATULATE HIM ON HIS REMARKABLE ACHIEVEMENT.”

- WISE Chairman H E Dr. Abdulla bin Ali Al-Thani,
upon conferring the 2012 Prize for Education



OUR APPROACH

Founded in 1994, *Pratham* strives to improve the quality of education in India. Our programs originate from specific needs in the Indian education system and employ innovative solutions to address educational disparity.

Pratham's strategy is to design and demonstrate pedagogical models that can be easily integrated by teachers to engage children and rapidly expanded by state and federal government to a national scale. This approach enables *Pratham* to maximize its impact—in nineteen years, we've reached more than **33 million children** across the country.

At the center of *Pratham's* methodology is a focus on building literacy and numeracy skills among young children (preschool to Grade 5).

Pratham's **Combined Activities for Maximized Learning (CAMaL)** method serves to reinforce core academic skills while strengthening children's engagement in learning. In recent years, *Pratham* has innovated programs for older children and young adults

based on these same principles to foster digital learning, science achievement and vocational training.

While *Pratham's* programs continue to evolve, one thing has never changed: our commitment to improving the quality of education.

We accomplish this in four major ways:

- **Content Development.** *Pratham* devotes immense capacity and resources to creating new and improved methods and delivery mechanisms for improving education and learning, mainly at the primary level.
- **Developing Demonstrative Models.** *Pratham* works with volunteers from local communities and schools to show how learning can improve.
- **Scaling Up via Partnerships.** *Pratham* works with the Indian government to rapidly expand its demonstration models, multiplying the impact of its teaching and learning initiatives. These partnerships may be at the level of the district or the state. Partnerships may also emerge with other private and non-profit stakeholders.
- **Tracking Gaps in Learning.** *Pratham* tests children before and during interventions to closely monitor the impact of our programs. Further, we conduct the largest survey of children's learning levels in India through our Annual State of Education Report, a review cited by education policymakers and replicated by education entities in other countries.

LEARNING AND TEACHING SOLUTIONS

With each passing year, *Pratham* gains new experiences and insights into primary education. We embrace a culture of self-reflection, learning and innovation, finding ways to strengthen the quality of our programs to better serve the children and communities we support.

READ INDIA - RURAL

Established in 2007, Read India comprises a series of education initiatives that combine rigorous academic instruction with fun, hands-on enrichment activities. The programs are designed to help children ages 3 to 14 attain basic literacy and numeracy skills that prepare them for school.

The second phase of the Read India campaign, Read India II, commenced



in 2010. This past year marks the fourth and final year of Read India II, an effort that has concentrated on reaching more children in India's rural regions.

Read India II is implemented through the demonstration of *Pratham* teaching and learning methods, aimed at:

- improving learning levels in reading and math,
- improving community engagement, and
- influencing teaching practices in public schools.

LEARNING CAMPS

In 2012, *Pratham* implemented the Learning Camp program throughout most of our Read India blocks after promising results were realized from trials conducted in 2011.

These short-term interventions offer intensive out-of-school time instruction to students in Grades 3 to 5 who are lacking reading and math proficiency at their grade level. At the camps, children are clustered by skill level. They are then taught using *Pratham's* CAMaL method, which requires children to speak, read, write, and perform learning activities.

420,951 children participated in these camps in 2012, which were held with the support of 27,842 volunteers in 11,530 villages across the country. The camps not only improved learning levels among student participants, they also increased the engagement of parents and the community.

Pratham has been invited by the state governments of Maharashtra, Madhya Pradesh and Bihar to launch statewide programs in teacher training based on the Learning Camp methodology.

आलसी सदा निराश रहता है

वृत्त

संयोजन

छाया

वृत्त

The Alphabet



LEARNING AND TEACHING SOLUTIONS CONTINUED

The three states combined hold 24% of India's population.

LEARNING SUPPORT CLASSES

Learning support classes in Math, Language and English, intended for children in Grades 3 to 5, are offered in tandem with the Learning Camps as a way to ensure children retain the lessons from the camps.

The learning support classes are taught by trained volunteers for three months with close monitoring by *Pratham* staff.

Through these classes and with the support of **36,596 volunteers and local school teachers**, *Pratham* reached **511,654 children** in **16,142 villages**.

READ INDIA - URBAN

Started with a single pre-school class in the city of Mumbai, today *Pratham's*

urban programs have expanded to 32 cities to serve over 300,000 children annually.

Pratham addresses barriers to learning for urban children through a comprehensive program of learning supports.

URBAN LEARNING CENTRES (ULC)

First, children are enrolled in school. Then, through the ULCs, *Pratham* provides additional supports through a series of age-appropriate programming:

- **Balwadis** represent *Pratham's* earliest foray into education. These pre-school classes are an important part of current efforts in urban communities. Children ages 3 to 5 from low-income families are provided quality early education to prepare them for school.

Approximately 20 to 25 children gather for class every day for 3 to 4 hours to learn letters, numbers, shapes, colors, stories, poems and songs.

Today, over **2,500 Balwadis** operate across the country in homes, places of worship and public squares to support **60,000 children**.

- **Tutoring Classes** are offered at UCLs to build and strengthen the reading, writing and arithmetic skills of children ages 6 and above. Classes support children who have dropped out and need tutoring to reintegrate into school. The UCLs also offer assistance to children who are enrolled in school but are struggling to keep up with their subjects.
- The ***Pratham* Community Libraries** provide children from low-income

families access to books in their local language as well as in English. In each neighborhood where *Pratham* operates a ULC, a library has been established either within the house of a local resident or in a nearby school. The objective is to ensure that all children have access to books.

Over **120,000 books** were borrowed from Community Libraries in 2012.

PRATHAM BOOKS

Established in 2004, *Pratham* Books publishes affordable, quality books for children in multiple Indian languages. Through this effort, we strive to place “a book in every child’s hand” and democratize the joy of reading.



LESSONS LEARNED AND APPLIED

Having successfully demonstrated and validated the value of our methods in primary education, *Pratham* is innovating new approaches for teaching older children during critical points in their schooling.

- Pratham’s **SCIENCE PROGRAM** stimulates scientific curiosity among middle school children by combining STEM (Science, Technology, Engineering, and Mathematics) learning with activities that involve the students observing or manipulating real objects and materials.
- The **ENGLISH PROGRAM** builds basic conversational skills and improves students’ ability to read and comprehend simple English.
- **PRATHAM OPEN SCHOOL**, started in 2012, nurtures girls who have dropped out of school and helps them to prepare for their secondary school examinations, often a requirement for employment.
- **COMPUTER-AIDED LEARNING** provides students an opportunity to acquire basic computer skills and **DIGITAL CLASSROOMS** enable teachers to incorporate technology into the classroom to strengthen children’s reading and math skills.

PARTNERSHIPS

Successful collaboration through partnerships is the one of the foundations upon which *Pratham* was built and remains a key element of our organization design.

Pratham is successful in rapidly scaling up primary education initiatives thanks to strategic partnerships with individuals, communities, local and state governments, and education entities.

In 2012, the Vodafone India Foundation in partnership with *Pratham* made a commitment to provide learning solutions to over 50,000 underprivileged children across India. Funds granted by Vodafone will provide resources for the 'Learning with Vodafone Solution' scheme across 1,000 schools in India over the next three years.

The Solution draws on innovative educational software that utilizes mobile technology to improve the learning experience. Through this platform, students get to explore learning via the Internet in an engaging and interactive environment.

PRATHAM ARORA CENTER FOR EDUCATION (PACE)

For the Vocational Skills Program, started in 2005, we sought out business and industry leaders to collaborate with us in a more significant manner. *Pratham* worked in close partnership with corporate entities to design robust curricula that integrate industry-driven competencies with literacy and job readiness training.

Through the work at PACE, *Pratham* aims to:

- empower disadvantaged young adults to achieve economic self-sufficiency,
- provide quality, industry-specific training and job placement,

- support the growing labor demands of the booming hospitality and construction industries,
- educate the general populous that vocational training is a viable alternative to higher education, and
- help young adults build the confidence and develop the soft skills needed to succeed in the professional world.

Today *Pratham* offers training programs at 19 residential facilities and 800 training centers in 15 of India's 28 states.

With the cooperation of our knowledge partners including Larsen & Turbo in construction, Taj Group of Hotels in hospitality and Intel in technology, *Pratham* provided 20,000 youth with skills toward employment in 2012.

PRATHAM PARTNERS WITH CITI TO PILOT EDUCATION ENTREPRENEUR PROGRAM

Pratham and Citi Foundation are collaborating to develop an Education Entrepreneur Development Program aimed at training and mentoring 120 education professionals who will in turn provide employability skills to 5,400 young adults in urban and rural communities across five states in India: Rajasthan, Uttar Pradesh, Maharashtra, Madhya Pradesh and Chhattisgarh.

The Citi Foundation has committed \$200,000 towards the one-year pilot program. The grant will underwrite training and materials costs and provide for a modest stipend for the Education Entrepreneurs for the year.

Upon completion of the program, the Education Entrepreneurs will be equipped to lead *Pratham* Foundation Courses, which provide education, training and job placement support designed to help recipients achieve economic self-sufficiency. These courses also encourage and prepare youth to pursue advanced industry-specific training in fields such as hospitality and construction.



Rather than receive a set salary, entrepreneurs will be incentivized to grow their enterprise independently from *Pratham*. Entrepreneurs will be encouraged to collaborate with local schools and colleges to recruit youth into their Foundation Courses.

The Education Entrepreneur model is unique in that it does not require large investments in infrastructure or human resources and instead capitalizes on a growing wave of young people who seek to be entrepreneurs. Further, this delivery approach makes for a sustainable model that is economically viable.

MEASUREMENT, REPORTING AND ADVOCACY

Pratham believes in measurable outcomes. As such, a concerted effort is made to evaluate programs in a timely and systematic manner in order to track progress and ensure transparency.

Pratham rigorously evaluates program impact through a series of quantitative and qualitative measures, including pre- and post-program assessments.

Program testing is performed by *Pratham's* Measurement Monitoring and Evaluation (MME) Unit, which is charged with accurate and timely data



collection, periodic analysis, reporting, and capacity building.

Evaluation results are used to ensure that *Pratham* can measure the impact of interventions, identify strengths and weaknesses and make necessary adjustments to improve programs and delivery systems.

In addition to internal monitoring, *Pratham* collaborates with external entities such as the Poverty Action Lab at MIT (J-PAL) to evaluate the effectiveness of programs.

In 2012, researchers from *Pratham* and J-PAL evaluated whether *Pratham's* Mothers' Literacy Program in Rajasthan, which encourages parental involvement, could improve learning outcomes in children.

Findings from this assessment as well as other J-PAL evaluations of *Pratham* programs are available at their website: www.povertyactionlab.org.

ANNUAL STATE OF EDUCATION REPORT (ASER)

Pratham's most influential program, ASER, surveys 600,000 children in 300,000 households annually across rural districts in India to assess learning levels for school-aged children.

The primary objective of the survey is to generate estimates of children's schooling status and basic learning levels at district, state and national levels, and to measure changes in these parameters over time.

ASER assessment tools are simple to understand and easy to administer, consisting of only 4 testing levels.

For example, the reading tool includes letters, words, a short paragraph, and a longer story. Proficiency is marked at the highest level at which a child can comfortably read.

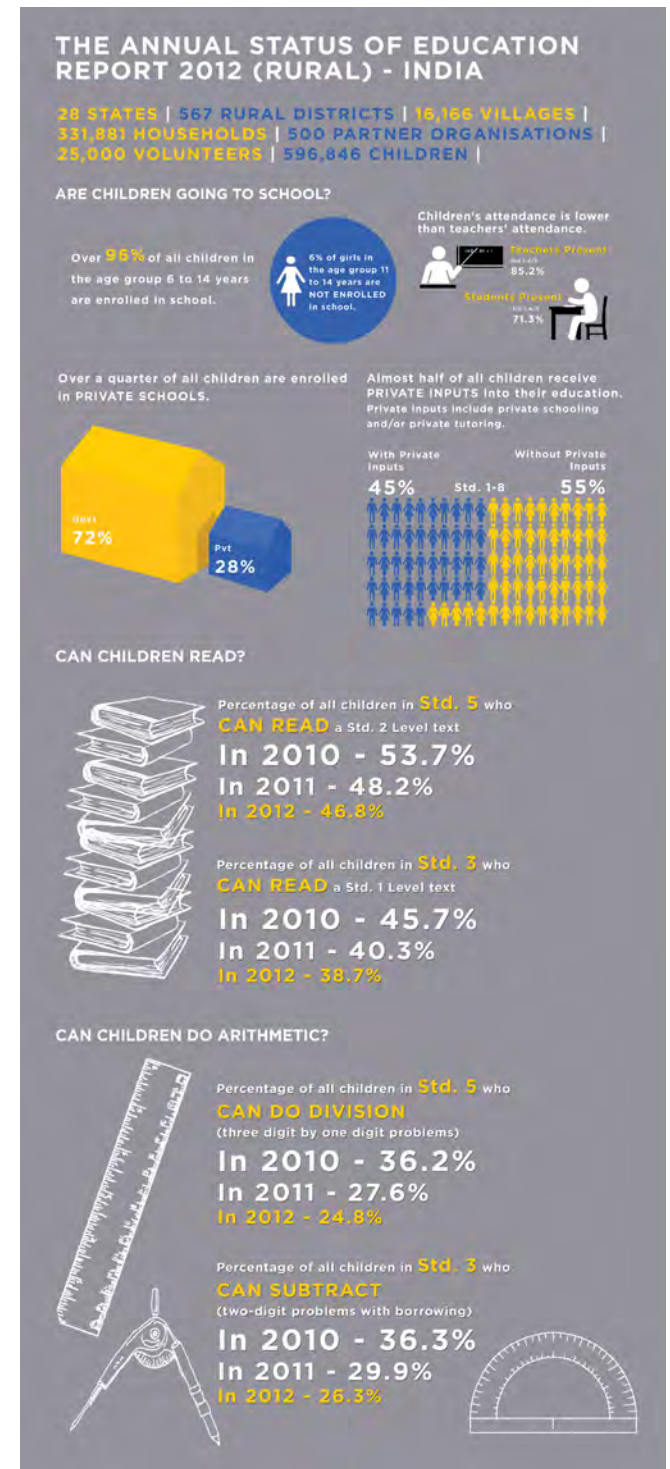
The 2012 survey, which reached **596,846 children** found:

- Enrollment continues to be very high, but the proportion of school-aged children who have dropped out has increased, especially among girls ages 11 to 14.
- Private school enrollment continues to rise in almost all states.
- Reading and math levels continue to be a cause for serious concern. More than half of all children in Grade 5 are at least three grade levels behind where they should be.

The findings are cited by education policy experts and have a major influence on governmental strategies and spending.

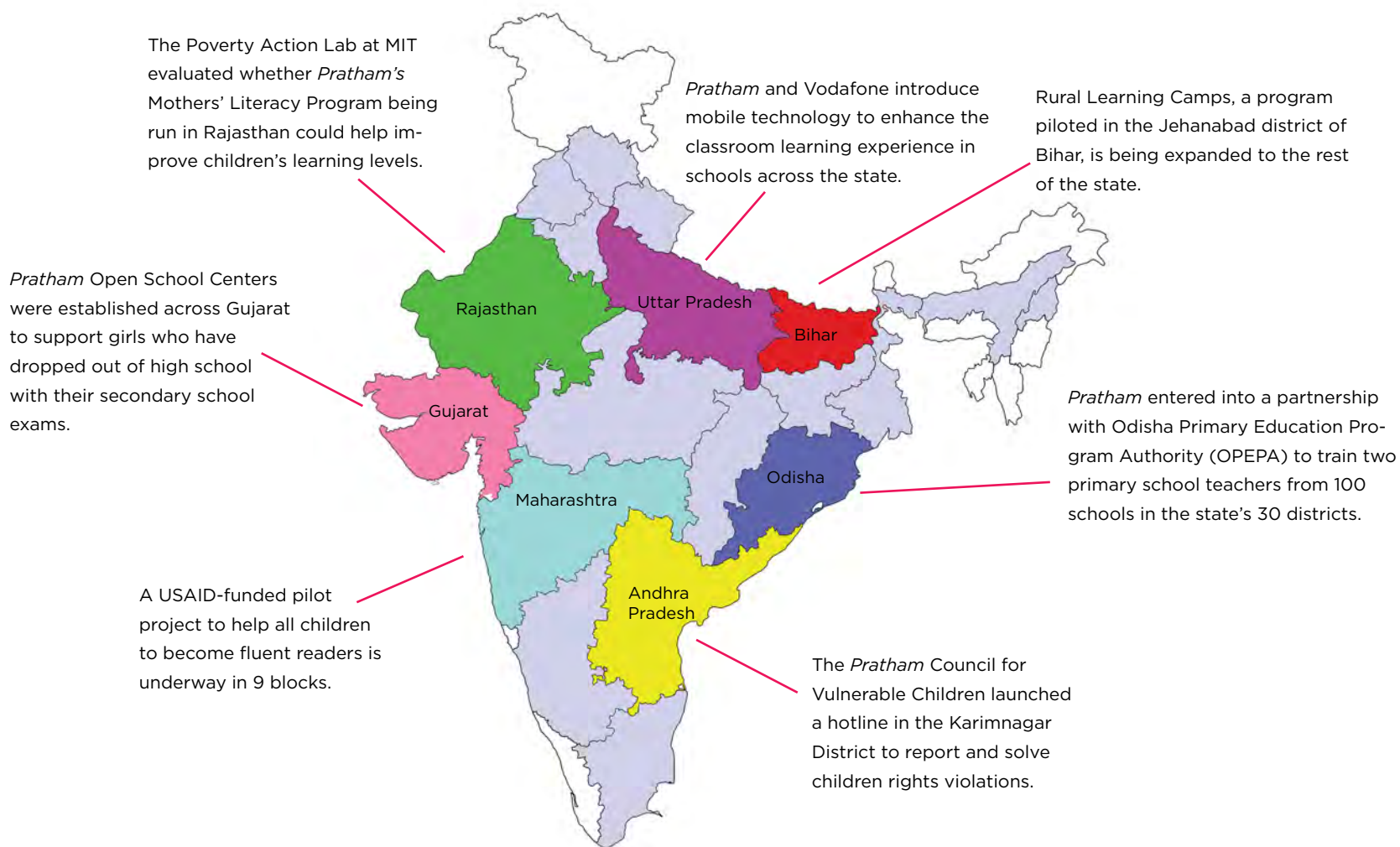
In previous years, the report has led to major policy successes in education. The Indian constitution was amended, in 2009, to give children a fundamental right to education. In addition, learning outcomes were added as a requirement in India's formal five-year plan. These measures are funded through a 2% national sales tax to support education.

ASER methodology is shaping not only India's policy on education; it is also being adopted by education entities across the developing world. Several nations in Asia and Africa, including Tanzania, Pakistan, Bangladesh, and Kenya have implemented ASER-type surveys for education assessment and reporting.

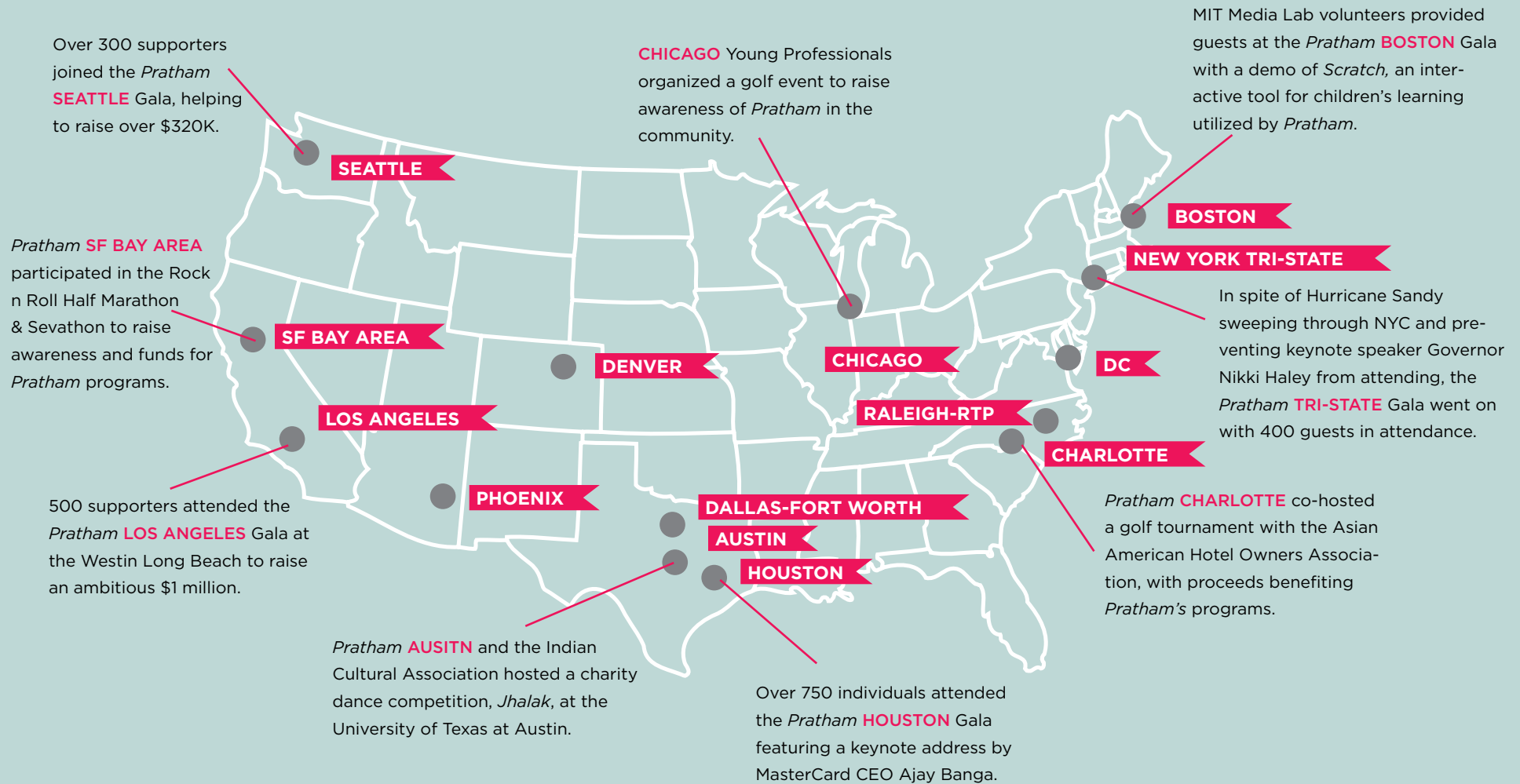


FROM THE STATES

With a presence in 20 of the 28 states, *Pratham* touches the lives of millions of children in communities across India. Below are some key achievements from the past year.



Pratham USA's 14 chapters raise awareness about the critical needs of children in India through events and campaigns. Below are some highlights from 2012.



JOINT REVIEW MISSION (JRM)

The JRM is an bi-annual examination of *Pratham's* programs and activities across India. The gathering creates an opportunity for *Pratham* leadership and major donors to interact and review programs and strategy.

The third JRM was held in December 2012 and involved participation by representatives from the Gates Foundation, the Hewlett Foundation, Children's Investment Fund-CIFF (UK), Dubai Cares (UAE), members of *Pratham USA* leadership and state Officials from Andhra Pradesh, Bihar and Chhattisgarh. The team was led by the Former Chief Secretary of Bihar, Mr. Anup Mukherji.

During the six-day Review, the panel made site visits to four states (Andhra Pradesh, Bihar, Maharashtra and Uttar Pradesh) to gain an in-depth view of how *Pratham* programs operate.

The panel assessed a range of programs including Read India and *Pratham* Open School and had extensive discussions around the topics of teaching methodology, models of implementation, community participation, government partnerships and advocacy. The Group noted:

- *Pratham's* state teams bring considerable energy and dedication to their roles.
- *Pratham's* consistent approach is remarkable given the organization's large size and the varying levels of education and skills of its local staff and volunteers.
- *Pratham's* proposal to combine learning camps with Read India classes was a good strategy as it preserves the benefits of having volunteer-led classes while retaining the sophistication of the *Pratham* staff-led classes.



FINANCIALS

PRATHAM USA STATEMENT OF ACTIVITIES

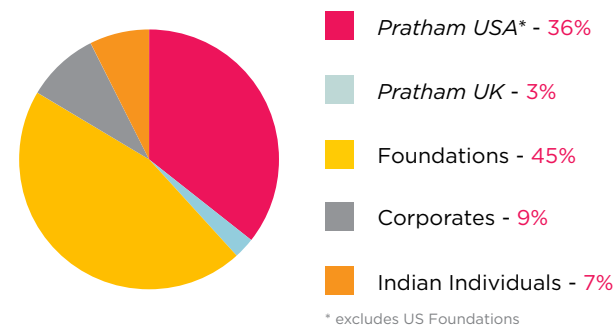
For the year ending December 31, 2012 (with comparative totals for 2011).
(Numbers in '000)

| SUPPORT AND REVENUES | 2012 | 2011 |
|-------------------------------------|------------------|------------------|
| | UNAUDITED | AUDITED |
| Contributions and grants | \$ 3,684 | \$ 4,157 |
| Special events | 3,648 | 3,007 |
| Less: direct benefit to donors | (549) | (485) |
| Other income | 4 | 80 |
| Expiration of time restrictions | 3,665 | 3,678 |
| | \$ 10,451 | \$ 10,437 |
| OPERATING EXPENSES | | |
| Program support | \$ 9,867 | \$ 8,131 |
| General and administrative expenses | 251 | 195 |
| Fundraising expenses | 583 | 463 |
| | \$ 10,701 | \$ 8,789 |
| NET ASSETS | | |
| Change in unrestricted net assets | (249) | \$ 1,648 |

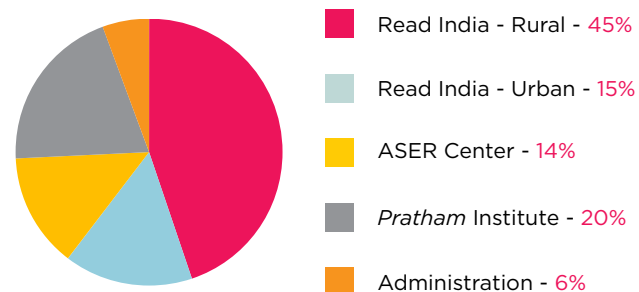
PRATHAM INDIA FINANCIALS

India financials (unaudited) are from April 2012 - March 2013.

PRATHAM INDIA REVENUE



PRATHAM INDIA EXPENDITURES



DONORS TO PRATHAM

Philanthropy plays an essential role in fulfilling *Pratham's* mission to educate every child. We gratefully acknowledge the generosity of our donors.

LIFETIME GIVING

\$2,500,000 & ABOVE

Chitra & Sudesh Arora
GE Foundation
Google
William and Flora Hewlett Foundation

\$1,000,000 - \$2,499,999

Artha Capital
Douglas B Marshall, Jr Family Foundation
Marie & Vijay Goradia
Shilpa & Arvind Sanger
Skoll Foundation

\$500,000 - \$999,999

Peggy & Avinash Ahuja
Indrani & Hemant Goradia
Omidyar Network
Qatar Foundation

\$250,000 - \$499,999

Deloitte
Bimla & Swatantra Jain
Johnson & Johnson
Marie Josee & Henry R. Kravis
Michael & Susan Dell Foundation

Anjna & Sanjay Motwani
Dr Geetha & Paul Pandian
Indira & Dr Om Singla
Wells Fargo

\$100,000 - \$249,999

Asha & Sajjan Kumar Agarwal
Hema & Dr Arvind Amin
Chitra Kumar & Kumar R Bashyam
Kalpana & Ramesh Bhatia
Calyon Credit Agricole
Capital Group Companies Foundation
Chugh Firm
Aashish & Dinyar Devitre
Patricia & Madhav Dhar
Drs Richa & Manish Dhawan
Diana & Arjun Divecha
Drs Leena & Nitin Doshi
Lisa & Bradford Freer
Meera & Vikram Gandhi
Goldman Sachs
Janet & Ravi Gulati
Sheila Gulati
Mimi and Peter Haas Fund
Jillian & Matthew Hochstetler
Naveen & Anu Jain
MacArthur Foundation
Himadri & Harish Katharani

Apoorva Koticha
Padma & Venkatram Kuditipudi
Manmeet & Prithvipal Likhari
Marc Haas Foundation
Shibani & Ivan Menezes
Manjula & Gopal Menon
Shirin & Preetish Nijhawan
Rohini & Suneil Parulekar
Madhu & Ashok Naran Patel
Vijaysree Venkataraman
& Subash Pereira
Peter G Peterson Fund
Chithra & Mahalingam Ramesh
Sudha & Satpal Rathie
Rotary Club of Cupertino
Urvashi & Gopal Savjani
Shah Capital Management
Rika & Manahar Shah
Ravi Singh
Rubie & Pradeep Singh
Pratap K Srivastava
St Simon Charitable Foundation
Chandrika & Ranjan Tandon
Tara Energy
Target
Drs Gauri & Atul Varadhachary
Vineeta Salvi & Amit Walia
Judith & Arjun Waney
Dr Ann Stock & Arshad Zakaria

\$50,000 - \$99,999

Agarwal Family Foundation
Amegy Bank of Texas
Bank of America
Jennifer Moses & Ron Beller
Arpita & Amit Bhandari
Shalini & Dilip Bhargava
Manisha & Devindra Chainani
Child Aid International
Citigroup
Ranika & Ruben Cohen
Credit Suisse Foundation
Rema & Dharmo S Dhamotharan
Dr Inge & Al Duran
Good Ventures
Aruna & Dinesh Goradia
Ruchi & Nobel Gulati
Yumi Iwasaki & Anoop Gupta
Gulie & Mohamed Hamir
Sheila & Rajan Hooda
i2 Foundation
Shashank & Medha Karve
Annapoorna Ogoti & Mukund Krishnaswami
Asha Agarwal & Sajjan Kumar
Rekha & Sunil Kumar
MAQ Software
Karen Petersen & Sanjeev Mehra
Nidhika & Pershant Mehta
Amrita & Prasad Menon

Sudha & Pravin Mody
Morgan Stanley
Sindhu & Avi Nash
Usha & Dr Rahul K Nath
New York Life Insurance
Options Group
P&G Fund
Pushpaben & Bhikhubhai U Patel
Drs Meena & Jayendra Patel
Pravina & Yogi Patel
Jyoti & Narendra Popat
Ashley & Ashish Prasad
Poonam Mittal & Ajai Puri
Rockdale Foundation
Charu & Adarsh Sarma
Leena & Ash Shah
Shama Tanveer & Rasool Shaik
Jyothi & Somesh Singh
Shubha & Madian
Somasundaram
Stemcor USA
Sudha & Subramanian
Sundaresh
Vikas Taneja
Ravi Tilak
Vinmar International
Sandeep Walia
Suzanne & Ravi Yadav

\$25,000 - \$49,999

Sushila & Dr Durga Agrawal
Tania & Anilesh Ahuja
Kamesh & Geeta Aiyer
Altman Kazickas Foundation
Ajay Bahl
Barclays Capital
Sumita Batra

Marion & Stanley Bergman
Rajesh Bhardwaj
Vijay & Dr Vinod Bhuchar
Leslie & Ashish Bhutani
Manish Bidasaria
William Biggs
Birla Institute of Technology
& Science Alumni Association
Bridgeway Foundation
Luci & Kamlesh Chainani
Ananya Sarkar & Indy Chakrabarti
Shubhra & Jeetendra Chakraborty
Dr Harpal & Harminder Chana
Anne & Albert Chao
Kuntala Das & Eshwar Purandhar
Anjna & Anup Desai
Rasika & Ramesh Dhekne
Satinder Dhillon
EY
Ben Gomes
Shetal Vora & Ashish Gupta
Kamla & Raj Gupta
Sunil Gupta
Vasudha & Bhupender Gupta
Yasmin & Satish Gupta
HSBC
Radhika & Dr Nikhil Inamdar
Inome
Manish Jain
Tinku & Ajit Jain
Aziz Jamaluddin
Tehmina & Tariq Jesrai
Natasha & Vinod Jindal
Juniper Networks Foundation
Swati & Sharad Kadakia
Dr Lav & Manisha Kapadia
Ram Karuppusamy

Sheryl & Chip Kaye
Gail & Victor Khosla
Ranjana & Ashok Kulkarni
Sumita Bhattacharya & Monish
Kumar
Macquarie Securities
Simi Ahuja & Kumar Mahadeva
Kavita & Sunil Mahtani
Sudha & Dr Ravi Mani
MasterCard
Shazma & Arshad Matin
Karl Mehta
Tara & Victor Menezes
Allison & Roberto Mignone
Mission Fish
Annu Rao & Sagar Naik

Newman's Own Foundation
Northwestern Mutual Foundation
Pannell, Kerr, Forster of Texas
Kirtida & Vimal Parikh
Sudha & Ramesh Parikh
Bhavna & Yashvant Parmar
Madhu & Ashok Naran Patel
Shivani & Hitesh Patel
Jyotsna Pattnaik
Prudential Financial
Neera & Deepak Raj
Neerja & Vasan Raman
Amar Rao
Rao & Satya Remala Foundation
Vasu & Dr Gurunath Reddy
Anupama & Dr Kota Jagdish Reddy

“WHEN I WAS A CHILD, I HAD THE OPPORTUNITY TO VISIT INDIA WITH MY FAMILY. AT THE TIME, I WAS OLD ENOUGH TO UNDERSTAND HOW DIFFERENT MY LIFE WAS FROM THE CHILDREN I MET THERE, BUT STILL YOUNG ENOUGH TO BE GENUINELY SURPRISED, PUZZLED AND DISHEARTENED BY THE EXTREME POVERTY. WHEN I HEARD ABOUT *PRATHAM*, I KNEW THAT THIS WAS SOMETHING I WANTED TO BE INVOLVED IN. I’VE ALWAYS HAD A FIRM BELIEF IN EVERY CHILD’S RIGHT TO A GOOD EDUCATION, AND PARTICIPATING IN *PRATHAM* SEEMED LIKE AN EXCELLENT WAY TO HELP GIVE CHILDREN IN INDIA THE OPPORTUNITY TO LIFT THEMSELVES OUT OF POVERTY.”

- Ashish Prasad, Founder and CEO of Discovery Services

Simran & Dr Pradeep Rihal
 Loveena & Mayur Saigal
 Jaleh & Homer Bruce Sallee
 Chitra & Dipak Sarkar
 Praggya & Pradip Seernani
 Leena & Bharat A Shah
 Prity & Ipcit Shah
 Dr Rucha & Anil Sheth
 Sumita & Daniel Sheth
 Anila & Dhiren Shethia
 Affie & Barry Siadat
 Niraj & Umesh Singh
 Ashu & Vinayak Singh
 Smiles Fashion Corp
 Sangeeta & Sanjiv Sobti
 Sanjay Srivasatava
 Dawne & Tim Strehl
 Preethi Krishna & Ram Sundaram
 Tharani Krishnamoorthy &
 Ravichandran Sundararajan
 Seema & Dr Randeep Suneja
 Kay & Ashok Talwar
 Ashok K Trivedi
 Itamar Turner
 Suvrata & Raj Unni
 Naresh Vashisht
 Vimla Sawhney Charitable
 Foundation
 Jayshree & Mahesh Vyas
 World Bank Community
 Connections Fund
 Angela & Chowdary Yalamanchil
 Paula Throckmorton & Fareed
 Zakaria

2012 GIVING: CORPORATIONS & FOUNDATIONS

\$1,000,000 & ABOVE

William and Flora Hewlett
 Foundation

\$250,000 - \$999,999

Artha Capital
 GE Foundation
 Qatar Foundation
 Skoll Foundation

\$100,000 - \$249,999

Deloitte
 Douglas B Marshall, Jr Family
 Foundation
 MacArthur Foundation

\$50,000 - \$99,999

Good Ventures
 Rotary Club of Cupertino

\$25,000 - \$49,999

Birla Institute of Technology &
 Science Alumni Association
 Capital Group Companies
 Foundation
 HSBC
 MAQ Software
 MasterCard
 Newman's Own Foundation

Shah Capital Management
 Wells Fargo

\$10,000 - \$24,999

Agarwal Family Foundation
 Amegy Bank of Texas
 Bill & Melinda Gates Foundation
 BMC Software
 Child Aid International
 Calyon Credit Agricole
 Concur Technologies
 Credit Suisse Foundation
 Chugh Firm
 Danem Foundation
 EMC Corporation
 Fidelity Investments
 Goldman Sachs
 Indus Valley Partners Corp
 Innovations for Poverty Action
 Kraft Foods Group
 Larsen & Toubro Infotech
 Morgan Stanley
 New York Life Insurance
 Standard Chartered
 The Uttarayan Fund
 Women's Rehabilitation Group
 Yale University

\$5,000 - \$9,999

Allstate Insurance Company
 Bank of America
 Clementina Foundation
 Cognizant Technology Solutions
 US Corporation
 EY
 GE Healthcare

Indo American Chamber of
 Commerce of Greater Houston
 Pannell Kerr Forster of Texas
 Stout Risius Ross
 TAUCK
 Vinmar International

\$2,500 - \$4,999

Arya Samaj Greater Houston
 Dollar Thrifty Automotive Group
 IBM
 IHS Global Inc
 Indo American Senior Heritage
 Kehillat Israel
 Kindred Healthcare Operating
 Klein Oak High School
 Lad Vanik Samaj of America
 Locke Lord Bissell & Liddell
 Pondicheri indian Restuarant
 Tara Energy
 UBS Financial Services
 Wallis State Bank

\$1,000 - \$2,499

Asian American Hotel Owners
 Association
 Bridgewater Associates
 CGI Technologies and Solutions
 Comerica
 Conrad N Hilton Foundation
 CRS Marble & Granite
 Dallas Indian Lions Club
 Elsie Cote Memorial Fund
 En-Fab Entrust Energy Inc
 HAKS
 I Do Foundation

India Community Center
iTexico
Jackson National Life Insurance Company
Kayser Foundation
Manhattan Beach Rotary Charitable Foundation
Meraboxoffice
Mood India
Persistent Systems
Porter Hedges
R W Zant Co
RTI International
Sodexo & Affiliates
South Bay Pharmacy
Sree Hotels
Systems Technology Associates
University of Michigan - Ross School of Business - MBA Class of 2012

CORPORATE MATCHING

We recognize the following corporate supporters who have provided matching gifts.

American Express
ArcelorMittal
Bank of America
Bill & Melinda Gates Foundation
BP
Cisco Systems
Dell

Fannie Mae
GMO Emerging Markets
Goldman Sachs
Google
Grantham, Mayo, Van Otterloo
Hewlett-Packard
Intel
Illinois Tool Works
Janus
JP Morgan Chase
KBR
Microsoft
Nokia
SAP
Soros Fund Management
TechAspect Solutions
Warburg Pincus
William & Flora Hewlett Foundation

2012 GIVING: INDIVIDUALS

\$500,000 & ABOVE

Chitra & Sudesh Arora

\$100,000 - 499,999

Aashish & Dinyar Devitre
Indrani & Hemant Goradia
Marie & Vijay Goradia
Bimla & Swatantra Jain
Shilpa & Arvind Sanger

\$50,000 - \$99,999

Peggy & Avinash Ahuja
Dr Geetha & Paul Pandian
Vijaysree Venkataraman & Subash Pereira
Rubie & Pradeep Singh
Ravi Tilak

\$25,000 - \$49,999

Arpita & Amit Bhandari
Anne & Albert Chao
Drs Richa & Manish Dhawan
Diana & Arjun Divecha
Kamla & Raj Gupta
Jillian & Matthew Hochstetler
Anu & Naveen Jain
Rekha & Sunil Kumar
Shibani & Ivan Menezes
Manjula & Gopal Menon
Anjna & Sanjay Motwani
Sindhu & Avi Nash
Drs Meena & Jayendra Patel
Pravina & Yogi Patel
Ashley & Ashish Prasad
Neera & Deepak Raj
Charu & Adarsh Sarma
Rika & Manahar Shah
Sumita & Daniel Sheth
Affie & Barry Siadat
Dawne & Tim Strehl
Chandrika & Ranjan Tandon
Ashok K Trivedi
Itamar Turner
Vineeta Salvi & Amit Walia

Judith & Arjun Waney
Suzanne & Ravi Yadav

\$10,000 - \$24,999

Asha & Sajjan Kumar Agarwal
Tania & Anilesh Ahuja
Hema & Dr Arvind Amin
Komal & Ketu Amin
Nisha & Harry Arora
Vivek Asava
Ritu & Ajay Banga
Sumita Batra
Marion & Stanley Bergman
Shalini & Dilip Bhargava
Swati & Bharat Bhise
William Biggs
Manisha & Devindra Chainani
Mala & Ashok Chandra
Ranika & Ruben Cohen
Anjna & Anup Desai
Bharti & Madhusudan Desai
Rema & Dhamo S. Dhamotharan
Dr Inge & Al Duran
Lisa & Bradford Freer
Ben Gomes
Aruna & Dinesh Goradia
Sheila Gulati
Yumi Iwasaki & Anoop Gupta
Shetal Vora & Ashish Gupta
Namrata & Manish Gupta
Gulie & Mohamed Hamir
Babina & Vinayak Hegde
Sheila & Rajan Hooda
Tehmina & Tariq Jesrai

We recognize and thank every donor to *Pratham USA*. However, donors contributing amounts less than \$1,000 are not listed due to space constraints.

Sonal Desai & Hemant Kanakia
 Agk Karunakaran
 Ram Karuppusamy
 Aria Parker & Saifuddin Kasubhai
 Gail & Victor Khosla
 Venkatesh Kini
 Apoorva Koticha
 Padma & Venkatram Kuditipudi
 Ranjana & Ashok Kulkarni
 Sumita Bhattacharya & Monish Kumar
 Simi Ahuja & Kumar Mahadeva
 Kavita & Sunil Mahtani
 Rohini & Rushi Master
 Karl Mehta
 Anuja & Nishad Mehta
 Shridhar Mittal
 Vikram Modi
 Sudha & Pravin Mody
 Vasant Nayak & Sheela Murthy
 Annu Rao Naik & Sagar Naik
 Ann & Joseph Nellis
 Rohini & Suneil Parulekar
 Poonam Mittal & Ajai Puri
 Subha & Kris Rajana
 Neerja & Vasan Raman
 Chithra & Mahalingam Ramesh
 Sudha & Satpal Rathie
 Rasika & Girish Reddy
 Rao & Satya Remala Foundation
 Loveena & Mayur Saigal
 Leena & Ash Shah
 Shama Tanveer & Rasool Shaik
 Sandeep Sharma
 Sadhana & Sunil Shenoy
 Anila & Dhiren Shethia
 Cartha & Nameer Siddiqui

Jyothi & Somesh Singh
 Niraj & Umesh Singh
 Ashu & Vinayak Singh
 Sangeeta & Sanjiv Sobti
 Shubha & Madian Somasundaram
 Anuradha & Mani Subramanian
 Sudha & Subramanian Sundaresh
 Radhakrishnan Unni
 Drs Gauri & Atul Varadhachary
 Sandeep Walia
 David Weekley
 Angela & Chowdary Yalamanchili

\$5,000 - \$9,999
 Uma & Bharat Aggarwal
 Sushila & Dr Durga Agrawal
 Madhu & Deepak Ahuja
 Kamesh & Geeta Aiyer
 Nancy Allen
 Nanda & Dr Vijay Anand
 Santosh Anoo
 Gunwanti & Suresh Bafna
 Ajay Bahl
 Rachel & Indrajit Bardhan
 Venkata Bavikati
 Christa & William Bell
 Jeannine Piacenza & Prashanth V Boccasam
 Ananya Sarkar & Indy Chakrabarti
 Shubhra & Jeetendra Chakraborty
 Harpal & Dr Harminder Chana
 Rakhee & Prajnan Das
 Kusum & Sanjeev Das
 Jane DeBevoise
 Colleen Denzler
 MC Dijkstra-Debets
 Mark Doliner

Kavita & Narendra Duvvuru
 Paula Phillips & Douglas Friedman
 Nikita Gandhi
 Sulabha Hardikar
 Radhika & Dr Nikhil Inamdar
 Taruna Jain
 Natasha & Vinod Jindal
 Shireen & Homi Kapadia
 Manisha & Dr Lav Kapadia
 Varianny & Vineet Kapur
 Seema & Shawn Karande
 Medha & Shashank Karve
 Himadri & Harish Katharani
 Sheryl & Chip Kaye
 Matthew Kerner
 Anu & Bobby Khullar
 Neela & Vic Kulkarni
 Janaki Srikrishnan & Srikrishnan Lakshmanan
 Jinying Li
 Manmeet & Prithvipal Likhari
 Mary & Donald Macleod
 Raj & Jugal Malani
 Mary & David Mann
 Jeremy Mantell
 Shazma & Arshad Matin
 Nidhika & Pershant Mehta
 Seema & Vivek Mehta
 Jyoti Menon
 Amrita & Prasad Menon
 Sharad Mudhol
 Seema Pareek & Gurdeep Pall
 Hareesh Paranjape
 Dr Sapna Singh & Mehul Parikh
 Madhu & Ashok Naran Patel
 Shital & Bhavesh Patel
 Shivani & Hitesh Patel

Pravin Patel
 Krutika & Pravin Pranav
 Lisa & Amritansh Raghav
 Pratima Abichandani & Vikrant Raina
 Radhika Puri & Raghuram Rajan
 Drs Usha & Vasudevan Raj Rajaram
 Chaya & Sridhar Rao
 Susan & Vikram Rao
 Drs Alka & Neeraj Sachdeva
 Aashish Samat
 Champaben & Himatlal Sangani
 Roopa & Murli Satagopan
 Praggya & Pradip Seernani
 Shoma & Prasad Setty
 Leena & Bharat A Shah
 Kalpana Shah & Dr Nik Shah
 Sharath Sharma
 Shreela & Vibhu Sharma
 Manisha Merchant & Nisheet Singh
 Raminder Singh
 Ratna & Bhuwan Sinha
 Sasha & Ole Slorer
 Duane & Molly Smith
 Slomi & Dr Rajiv Sobti
 Sudha Srikantaswamy & Bhanuprakash Subramanya
 Tharani Krishnamoorthy & Ravichandran Sundararajan
 Kay & Ashok Talwar
 Sharon & Timothy Taylor
 Ketan Trivedi
 Suvrata & Raj Unni
 Anupa & Dr Prabodh Varshney
 Ravindra & Anil Venkatrao
 Ritu Piplani & Shailendra Verma
 Deepti Vyas



AKSHA MALA TAMANG lost both his parents to a tragic accident at the age of seventeen. At that time, his older brother was just twenty and the liabilities of young Aksha were difficult for him to handle alone.

He was very concerned about his little brother's future and wellbeing, but with no relatives to turn to or any form of income, he had no choice but to enroll Aksha in a *Pratham* Council for Vulnerable Children (PCVC) shelter.

Soon after Aksha was enrolled in the shelter, he was also admitted to a secondary school in Grade 8. There he flourished. He was a sincere student and always eager to learn. He enjoyed listening to music and practicing singing.

Aksha's years in the shelter passed smoothly, which is not always the case with rescued and sheltered children of his age, especially boys. He passed his Secondary School Examinations in the 48% percentile enabling him to pursue a college education.

Today Aksha is twenty-three and is earning a Bachelor's degree in Social Work from the prestigious Nirmala Niketan Institute of Social Work. The regular follow-ups on him by PCVC staff have shown that he is performing extremely well in his assignments and is one of the brighter students in his class.

He now lives with his brother and has expressed a desire to pursue a career in the social sector upon graduation.

Gulestan & Dinyar Wadia
Smita Singh & Tim Westergren
Teri & Kabir Yamana

\$2,500- \$4,999

Dr Jayshree & Naren Adenwala
Pallavi & Gurvinder Ahluwalia
Chinhui Allen
Hakim & Shahla Aly
Paula & Francis Amsler
Jeremy Aron-Dine
Dr Kiran & Parkash Arora
Akankshi & Sartaj Arora
Monica & Dalip Awasthi
Nadia Aziz
Anu & Dr Natarajan Bala
Arundhati & Abhijit Banerjee
Subhash & Pooja Banerjee
Minal & Atul Barve
Sonal & Bipin Bavishi
Sharina & Jay Belani
Vivek Bhargava
David Brickey
Dr Arinder Chadha
Sneha & Jitesh Chanchani
Mita & Pallab Chatterjee
Bandana & Munish Chawla
Juhy & Raj Daniels
Rumki & Shivaji Dasgupta
Navya & Anil Dasyam
Nimitt Desai
Bella & Rakesh Desai
Rajani Katta & Samir Desai
Manjri & Rajen Dhama
Adhavan Manickam & Chandra
Dhandapani
Satinder Dhillon

Vijay & Dr Ashok K Dhingra
Sudha & Dr Om Dhingra
Mandar Donde
Raj Farma
Jyoti & Rajinder Gandhi
Tracy & Narendra Ganti
Sunny Singh
Anne Giske
Jyoti & Anil Godhwani
Gautam Godhwani
Kavya Gopal
Prabha Ravi & Ravi Gopalan
Harshavardanan Gopianandan
Padmini Multani & Vineet Goyal
Russell Green
Anita & Ashwini Gupta
Vasudha Gupta & Bhupender Gupta
Neeti khaitan & Rajesh Gupta
Yasmin & Satish Gupta
Nisha & Dr Maninder Guram
Asheesh Jadav
Vivek Jain
Sada Joshi
Saeed Joshi
Joseph Joy
Swati & Sharad Kadakia
Hema & Raj Kalyandurg
Dr Raj Kanodia
Sutej & Simmi Kapur
Sarada & Vishwa Karthik
Najma & Mehdi Khimji
Saran Jyot & Dr Harmohinder
Kochar
Padma Konduri
Niraj Kumar
Raminder & Vinay Kumar
Ron Flynn & Meena Lakdawala

Kuldip & Dr Sewa Legha
Sameera Kapasi & Ashish Mahendru
Sonia Kapoor & Nik Malik
Sudha & Dr Ravi Mani
Anjali & Satish Mansukhani
Anjali & John Markey
Nalini & Dr Virendra Mathur
Pravina & Sunil Mehrotra
Kirtna Pai & Asheet Mehta
Nisha & Devang Mehta
Rajul & Dharendra Mehta
Meena & Hemu Mehta
Renae Holman & Prashant Murti
Sukanya & Omkaram Nalamasu
Kishore Narayan
Hansa & Prem Nasta
Harsha & Anil C Odhav
Lalita & Hemant Pandit
S Mona Parikh
Bhavna & Yashvant Parmar
Sateja Parulekar
Minal & Bharat Patel
Dr H D Patel
Kamal Patel
Samir & Kshipra Patel
Peena & Kanti Patel
Pritesh Patel
Hemlatta & Rameshkumar Patel
Mark Rentz & Rupa Patel
Shalini & Tejesh Patel
Hansa & Vallabhbbhai Patel
Anshuman Patwardhan
Priya Radhakrishnan & Rajiv
Poduval
Manisha Powar
Rupa Lavanya & Sridharan
Rajagopalan

Shanthi & Rengasamy Ramshankar
Amar Rao
Chethan Rao
Savita & Sanjay Rao
Sharmila & Pradeep Rathinam
Chitra & Dipak Sarkar
Shoma & Abhijit Sengupta
Reena & Devan Shah
Fiza & Mansoor Shah
Bela & Ravin Shah
Michael Shanahan
Nilima Rajkumar & Roshan Shankar
Gowri Sharma
Dr Maya & Vittal Shenoy
Drs Rucha & Anil Sheth
Manisha & Vijay Singal
Vibha & Ashok Singh
Indira & Dr Om Singla
Shailini & Rajendra Sisodia
Greg & Mimi Slyngstad
Marianne & Roy Smith
Sandeep Somaiya
Hema & V S Sridharan
Srinivasan Subramaniam
Nageeb Sumar
Suman Sundaresh
Hasmukhlal Vankawala
Vivekanand Vemunoori
Lisa Wilson & Neeraj Vohra
Jayshree & Mahesh Vyas
Phillipa & David Wilcox
Kalpana & Jagjit Yadav

\$1,000 - \$2,499

Mona Abraham
Omana & Sam Abraham
Ameeta & Dr Arup Achari

Subha & Dr Sunit Kumar Addy
 Harish & Vandana Agarawal
 Rekha & Rajendra Agarwal
 Simran Rekhi Aggarwal & Anil Aggarwal
 Govind Agrawal
 Tilak Agrawal
 Amy & Gagan Ahluwalia
 Anju Bala & Kanwal Ahuja
 Rina & Joher Akolawala
 Paulette & Richard Altmaier
 Usha & Srinivas Amble
 Sarika Amin
 Sonu & Dr Bhupinder Anand
 Deepa Ollapally & Gnana Anandalingam
 Matthew Fiedler & Aviva Arondine
 Silvia Weyerbrock & Sanjeev Arora
 Drs Bagyalakshmi & Palaniappan Arumugham
 Rohan Athanikar
 Kiran Aurora
 Shruti Pandya & Amrit Babu
 Marjan Badiei
 Alka & Akhtar Badshah
 Rahul Baijal
 Darshan & Dr Manjit Singh Bains
 Reema & Ratan Bajaj
 Lakshmi Natarajan & Sridhar Balasubramanian
 Ganga Krishnamurthy & Venkatesh Balasubramanian
 Tracy Stampfli & Lalit Balchandani
 Anik Banerjee
 Surachita Mishra & Rajat Barva
 Kushal Basu
 Mita & Kushal Basu

Gabrielle & Bill Baumeyer
 William & Romaine Beasley
 Dr H S & Aku Bedi
 Sunil Bellani
 Saikat Bhadra
 Anita & Jaikishan Bhagia
 Aneeta & Gunvant Bhakta
 Anita & Rakesh Bhalla
 Sreedhar Bharath
 Sushma Singh & Anil Bhatia
 Asmita & Arun Bhatia
 Urvashi & Sushil Bhatia
 Varsha & Satish Bhatt
 Harvinder S Bhela
 Penelope & John H Biggs
 Amita Desai & Thomas Birch
 Teresa & Rusty Braziel
 Upma & Vikram Sen Budhraj
 Venkatesh Nakkala & Shailaja Bulgannawar
 Marjorie & Justin Carlson
 Raibu Chacko
 Surinder & Vinod Chadha
 Ravi & Dr Hemasree Chaliki
 Suresh Chandrasekaran
 Archana & Dr Subhasis Chatterjee
 Shalini Kwatra & Amit Chaudhry
 Ayesha & Imarn Chaudhry
 Debjani & Surajit Chaudhuri
 Deepa Poduval & Rajesh Chelapurath
 Ramakrishna Cherukuri
 Bharati & Dinkar Chheda
 Sanjay Chheda
 Aalap Chikhalikar
 John Chirapurath
 Srini Chittaluru

Venkatesh Chittari
 Rajan Chopra
 Leigh & Sid Chowdhary
 Rahul Christopher
 Kimberly & Albert Cianci
 Kristen Olson & Luis Crouch
 Hira & Toos Daruvala
 Bharat Das
 Raman Das
 Taru & Somshankar Das
 Meena Datt
 Datta Dave
 Meena & Nailesh Dave
 Niloufer & Edul Daver
 Jennifer & Thomas Davidson
 Praveen Dayalu
 Dr Daphne deMello
 Pradeep Deolankar
 Falguni & Anant Desai
 Bhavna & Kalpesh Desai
 Kalpana & Kundan Desai
 Neeta & Mahesh Desai
 Falguni & Pratik Desai
 Ratnang D Desai
 Katharine & Rohit Desai
 Kalpna & Satish Desai
 Drs Nina & Shetal-Nicholas Desai
 Vaishali & Samir Deshpande
 Prema & Dr Venkat Devarajan
 Drs Rasika & Ramesh Dhekne
 Bhawana & Varun Dhingra
 Asha & Pankaj Dhume
 Raymond DiNunzio
 Chitra & S Murthy Divakaruni
 Anita Dodia & Satyajeet Dodia
 Veena & Ramesh Dolwani
 Brandon Drake

Juliette & Prasenjit Duara
 Julie Markus Dutta & Anirban Dutta
 Dr Susan Sobolewski & Prajit Dutta
 Shila & Nagraj Eleswarapu
 Cynarah & Tivanka Ellawala
 Paula Garrett Ellis & Peter Ellis
 Sonal Ellison
 Gwen & Judge Ed Emmett
 Natalie & Vipul Engineer
 Winnie & Michael Feng
 Marsh & Genevieve Fernandes
 Tracy & John Foreman
 Bhargavi Gali
 Harsharan & Satnam Gambhir
 Sushma Gambhir
 Rajesh Ganatra
 Aashish Gandhi
 Parinda & Mukesh Gandhi
 Heena Gandhi & Rajeev Gandhi
 Matt Stedl & Bonny Garcha
 Shipra & Ashok Garg
 Kajal & Sunil Garg
 Christiane Gautier
 Eve Gerber
 Jitendra Ghelani
 Indrani Gill
 Arati & Vishwas Godbole
 Sunita & Madhu Godsays
 Ashish Goel
 Abha & Ramil Goel
 Rajesh Gogia
 Drs Raka & Jay Gohel
 Indra Gohil
 Tejal & Devang Goradia
 Joseph Gravante
 Cynthia Gray
 Padma & Anil Gudapati



KOMAL, in a situation all too common in India, was forced to drop out of school in Grade 9 due to her family's economic situation and her mother's poor health. She was then married off at a very early age.

Over the years, she has lamented the opportunities that she missed. Now twenty-four, she envisions a different future for her five-year old daughter. And it was this aspiration for her daughter that inspired her to seek out ways to complete her own education.

"My husband and I decided not to send our daughter for tuition classes and that we would be the best tutors to her. This gave me the strength to pick up where I had left off."

Thus Komal enrolled herself in the *Pratham* Open School program. She is a dedicated student and spends time studying alongside her household responsibilities. She is committed to successfully completing her studies and eventually going on to college.

| | |
|-------------------------------|----------------------------------|
| Kalpana & Ranjan Guha | Mayura & Ramkumar Jayam |
| Manjit K & Mohinder S Gulati | Kristy & Firoz Jhaver |
| Deepak Gunasekaran | Lajwanti & Dr Ramesh Jhaveri |
| Sangeeta Gupta & Anupam Gupta | Anita & Amit Kumar Jindal |
| Drs Pushpa & Dev Raj Gupta | Vineeta & Malay Jindal |
| Renu & Kedar Gupta | Pinkal Jogani |
| Tanima & Neeraj Gupta | Sheela & Dr John Joseph |
| Dr Aruna & Ram Gupta | Jyoti Joshi |
| Anita & Sanjay Gupta | Sheila Juthani & Nitin Juthani |
| Dr Satish Gupta | Dipika & Vinod Kadakia |
| Srijay Gupta | Tanvee Kale |
| Madhavi & Suren Gupta | Sajida & Shaik Kaleem |
| Harsh & Swapna Gupta | Rahul Kamada |
| Umang Gupta | Chandrika Kamath |
| Sharda & Uttar K Gupta | Nandini & Ashok Kanagal |
| Jennifer & Waddy Hammond | Ambika Kapoor |
| Amanda Haney | Sita & Arthur Kapoor |
| M Shae Hanford | Rajiv Kapuria |
| Pamela & James Harris | Jayant Khadilkar & Manju Karkare |
| Chitra & Sudhindra Herle | Aruna & Brij Kathuria |
| Lisa Thomas Hussain & Moham- | Veena & Dr Kuldip Kaul |
| med Hussain | Ania Loomba & Suvir Kaul |
| Caroline & Edward Hyman | Varsha & Ashish Kaura |
| Sarla & Subhash Inamdar | Ayesha Kazi |
| Vishal & Shankar Iyer | Kanishka Kelshikar |
| Rupa & Shridhar Iyer | Krishnaram Kenthapadi |
| Madhavi & Jeffrey Jacques | Ashwan Khanna |
| Sunita & Abnash Chander Jain | Karan & Kirti Khanna |
| Ajay Jain | John Yates & Punita Khanna |
| Akash Jain | Seema & Somesh Khanna |
| Rita & Alok Jain | Anjali & Sadruddin Khawaja |
| Himanshu Jain | Susie & Raghav Kher |
| Manish Jain | Manorama & Shantik Khinduka |
| Rohit Jain | Hunter King |
| Jasmine & Vipp Jaswal | Sonia Carlson & Ajitesh Kishore |
| Ramkrishna Javalkar | Colleen & Ashish Kishore |
| Sharmishtha & B Jayachandran | Sandhya & Robert Klute |

Neelay Kothari
 Sarah Kozloff
 Jo Krishnamoorthi
 Akhil Kumar
 Priya & Amit Kumar
 Manisha Patel & Amit Kumar
 Shailja & Atul Kumar
 Nishant Kumar
 Mahima & Pankaj Kumar
 Elashri & Pradeep Kumar
 Rakesh Kumar
 Shantha Kumar
 Somasundaram Kumaresamuthusa
 Todd & Lynne Lachenmyer
 Krishnaveni Prakash & Prakash
 Lakshmanan
 Salonika & Venk Lal
 Karen & Stephen Lee
 Gregory Leiserson
 Aldila Lobo
 Almudena Bernardo & Helmuth
 Ludwig
 Shada & Piyush Lumba
 Gunilla & Vidur Luthra
 Nandini & Ashish Madan
 Rati Bahadur & Karan Madan
 Pragya & Neel Madhvani
 Monica & A K Mago
 Mohan Mahadevan
 Usha Krishnamoorthy & Moorthy
 Mahadevan
 Suneeta & Uday Mahagaokar
 Surabhi & Naresh Mahajan
 Rahul Mahajan
 Vijay Mahajan
 Neil Malik
 Jyoti & Dr Sushanta Mallick

Betty J & Ellis L Malone
 Mini & James Mammen
 Robert Marney
 Rajeshri & Hiren Masher
 Neelam & Prakash Mathrani
 Kirti Mehra
 Ila & Dr Gunvantray Mehta
 Purvee & Kartik Mehta
 Palvi & Kumar Mehta
 Shailee Mehta
 Mohini & Murli Melwani
 Ayesha Menon & Rob Sawyer
 Lopa Mishra
 Jayadev & Mamata Misra
 Karin & Amit Mital
 Ritu Sahai & Manish Mittal
 Anil Modi
 James Moffatt
 Seema Mohanty & Mihir Goswami
 Ann & John Montgomery
 Dr Sunita & Suresh Moonat
 Mark Moraes
 Steve Morgan
 Shaswati & Purnendu Mozumder
 Vikram Mulchandani
 Voula & Rick Muller
 Preet & Hardeepak Munday
 Ranjana & Rajeev Mundhe
 Shanthi & Bala Murali
 Neeta & Santosh Nabar
 Dr Rani Anbarasu & Anbarasu
 Nachimuthu
 Satya Nadella
 Tejas Nadkarni
 Zita & Shantanu Naik
 Renu & Sanjai Narain
 Rani & Chandra Narayan

Ramaswami Narayan
 Raman Narayanan
 Deep Nasta
 Leena & Sanjay Nasta
 Faye Katt & Ganesh Natarajan
 Namita & Ramkrishna Nayak
 Ritu & Sanjay Nenawati
 Jesse Newmark
 Sonia Singhal & Anshul Nigham
 Katharina Nissen
 Anandita & Kawal Oberoi
 Teresa & Jacob Oommen
 Ravi Oswal
 Marie & Kevin Page
 Seema & Ravi Pai
 Sudha & Nandan Pai
 Roopa & Sunil Pai
 Atul & Patricia Pande
 Hema & Himanshu Pandya
 Harjot & Sukhviri Singh Pannu
 Vinita & Muktesh Pant
 Vimla & Ajit Paralkar
 Puneet Pardasani
 Namrita & Dr Daksheshkumar
 Parikh
 Sudha & Ramesh Parikh
 Sarla & Bob Parmar
 Raksha & Rohit Parmar
 Malini Balakrishnan & Sanjay
 Parthasarathy
 Urmila Parthasarathy
 Bharti & Deepak Pasi
 Sonia & Mohit Pasi
 Hema & Subhash Patankar
 Prabha & Arvind M Patel
 Nita & Ash Patel
 Binta & Ashwin Patel

Chanda & Bharat Patel
 Adra & Divyesh Patel
 Hemlata & Dr Jagdish Patel
 Jagruti & Dr Jayesh Patel
 Dr Jyoti & Navin Patel
 Nirali Patel
 Nirav Patel
 Parag Patel
 Pragna Patel
 Devyani & Rasik Patel
 Sangita Patel
 Shivani Patel
 Drs Shaila & Sumant Patel
 Uptal Patel
 Falguni & Vimal Patel
 Yatin Patel
 Usha & Dr Kumara Peddamatham
 Professor Eswar Phadia
 John P Philip
 AnilKumar Pochiraju
 Janet Levinger & William Poole
 Uma & Ramanarayan Potarazu
 Mamta & Madhukar Prasad
 Rima & Ray Prasad
 Lant Pritchett
 Ravi Puli
 Arvind Puntambekar
 Sajal Puri
 Rekha & Yash Puri
 Jeffrey Rachor
 Shanthi & Narayanan
 Radhakrishnan
 Uma Raghavan
 Vijayakumar & Sampada
 Raghavendran
 Sirish Raghuram
 Shuling & Manohar Raheja

Mani Rahman
David Raj
Raju Rajan
Shusila & Sanjivi Rajasingham
Neelam & Puneet Rakesh
Ramachandran Natarajan &
Mallika Ramachandran
Supriya & Shanker Ramamurthy
Swapna Venugopal & Sanjay
Ramaswamy
Sanjay Ramaswamy
Jayendra Ramesan
Vijay Ramjee
Menaka & Vissa Rammnohan
Sameer Rana
Niranjan V Rao
Archana & Rajesh Rao
Pratima & Vivek Rao
Sanjeev Rastogi
Sanjay Rattan
Urmi & Vikram Raval
Karuna & Viresh Rawal
Elizabeth Rebello
Suma Kulkarni & Jonathan Redburn
Anupama Kota & Dr Jagdish Reddy
Subhakar Mutyala & Swapna Reddy
Sean Rice
Roону Rizavi
Elizabeth & Brian Romere
Gerald Rosenfeld
Matt & Shanthi Rubin
Vaishali & Ajit Sabnis
Kavita & Gautam Sachdev
Sonal & Nirav Sachdev
Vijay & Baldev Sachdeva
Prabha & Shailendra Sacheti
Sanjay Dhanraj Sahgal

Nitin Saigal
Sangeeta Saikia
Indira & N Ram & Saladi
Brooke Salisbury
Davita Manhas & Sunil Saluja
Karthik Sankaran
M & J P Sarkar
Urvashi & Gopal Savjani
Arjun Saxena
Shubhada & Manoj Saxena
Dana Schmidt
Diana & Narendra Sehgal
Charu Varshney & Arya Sekhar
Ross Selvaggi
Praveen Seshadri
Ranjani Ramamurthy & Praveen
Seshadri
Roshan & Zarir Sethna
Peruvemba Satish & Rupa Sethu
Purnima & Anil Shah
Anil Shah
Usha & Chandrakant Shah
Jayana & Dhiren Shah
Shakuntla & Dipak Shah
Hemangini & Dipak Shah
Jyotsna & Harshad Shah
Meena & Has Mukh P Shah
Rashmi & Jigar Shah
Chetna & Kamlesh Shah
Parin & Mukesh Shah
Mona & Parin Shah
Nina Dodd & Piyush C Shah
Harsha & Dr Priyavandan Shah
Sheela & Ramesh Shah
Sejal & Sudeep Shah
Gita & Tasvir Shah
Kimberly & Viqar Shariff

Anurag Sharma
Janki & Ketan Sharma
Suman Mukul Sharma
Katherine & Abe Shasha
Dhiren Sheth
Suri & Arun Shukla
Smita Siddhanti
Shazia Fahim & Fahim Siddiqui
Anurita & Ashutosh Singh
Avi Singh
Madhu & Ishwar Singh
Komnieve Singh
Mona & Munindar Singh
Farida Khan & Ramesh Singh
Anu & Ravi Singh
Raminder & Tej Singh
Drs Shantanu & Usha Sinha
Suzanne Spaulding & Gary Slaiman
Ajit Sodhi
Rukmini & Raj Srikanth
Ashish Srimal
Balaji Srinivasan
Lakshmipriya Easwaran & Hari
Srinivasan
Sujatha & Hari Subramanian
Stephanie & Prem Sagar
Subramanian
Romes Subramanian
Sujeet Sukumaran
Sonal & Prabhat Sur
Nagesh Tagarathi
Mohit & Sheila Talwar
Tamseela Tayyabkhan & Sanjeev
Khanna
Ishani & Vikas Tewari
Rajesh Thakkar
Ranjana & Satish Thakrar

Sowmya Rajeev & Rajeev Thalla
Meena & Bharat Trivedi
Neela & Bhargav Trivedi
Bruce Tuckman
Hari & Sharmila Tumu
Rukmani Subramanian &
Damodharan Ulagaratchagan
Savitha & Raviraja Upadhya
Shashi Upadhyay
Nita & Ashi Varia
Vasanth & Srini Vasam
Sita & Vijay Vashee
Prashant Vashi
Nilima & Urvish Vashi
Hitesh Vashishtha
Rajeev Vasudeva
Bharath Vasudevan
Joyce Anne & Dr Sridhar Vasudevan
Drs Suneela & Ravindra Vegunta
Randhir Vieira
Nila & Subhash Vohra
Varsha & Sharad Vora
Poonam Singh & Gauhar Wadhera
Vrishali Wagle
Niti Walia
Michael Walton
Paula & Thomas Wells
Koby West
Hitesh Yagnik
Anthony Yoseloff
Nancy Zigler

IN KIND DONATIONS

Sales Force
The Chugh Firm
Geosphere Capital



FOR MORE INFORMATION

www.prathamusa.org
Phone: 1.866.PRATHAM
Fax: 713.583.6779
Email: info@prathamusa.org

Main Office

9703 Richmond Ave, Suite 102
Houston, TX 77042

East Coast Office

c/o Geosphere Capital
733 Third Avenue, 19th Floor
New York, NY 10017

West Coast Office

c/o The Chugh Firm
4800 Great American Parkway
Suite 310, Santa Clara, CA 95054

MAKE A GIFT TO PRATHAM USA

Donate by credit card online at
donate.prathamusa.org.

Donate by check to any of our
mailing addresses.

Donate stock. For transfer
instructions, please call or email us.

*Pratham USA is a 501(c)(3) organization.
All non-event donations are fully tax
deductible. Over 94% of the funds raised
by Pratham USA go directly to support
programs in India, so the impact of your
funds is maximized.*

Federal Tax ID # is 76-0620808



Pratham USA

Every Child In School and Learning Well

www.prathamusa.org